

Anti-SLC34A2 hlgG1 Reference Antibody (Upibio)

Product Information

Product Name	Anti-SLC34A2 hlgG1 Reference Antibody (Upibio)
Storage temp.	Store at 2-8°C short term (1-2 weeks).Store at $\leq -20^{\circ}\text{C}$ long term. Avoid repeated freeze-thaw.
Catalog# / Size	GM-86855MAB-1mg / 1 mg GM-86855MAB-5mg / 5 mg GM-86855MAB-25mg / 25 mg GM-86855MAB-50mg / 50 mg GM-86855MAB-100mg / 100 mg

Antibody Information

Expression System	CHO
Aggregation	< 5% as determined by SEC-HPLC
Purity	> 95% as determined by SDS-PAGE
Endotoxin	< 1 EU/mg, determined by LAL gel clotting assay
Sterility	0.2 μm Filtered
Target	SLC34A2
Clone	Upifitamab
Alternative Names	NAPI-3B, NAPI-IIb, NPTIIb, PULAM
Source/Isotype	Human IgG1(REEM),kappa
Application	Flow cytometry
Description	Solute carrier family 34 member A2 (SLC34A2), also known as NaPi2b, pH-sensitive sodium-dependent phosphate transporter, which belongs to the solute carrier (SLC) family. The SLC34 family consists of three sodium-dependent phosphate transporters, A1, A2, and A3, that carry the monovalent form phosphate into cells. SLC34A2 is a sodium dependent inorganic phosphate (Pi) transporter that regulates phosphate homeostasis in various organs, including the small intestine, lung, liver, and testis. In the small intestine, NaPi-2b localizes to the intestinal brush border membrane to mediate Pi reabsorption. In the lung, NaPi-2b is expressed in the apical membrane of type II alveolar cells and is involved in the synthesis of surfactant. Mutations in the corresponding SLC34A2 gene causes pulmonary alveolar microlithiasis, a rare autosomal recessive disorder characterized by the deposition of calcium phosphate microliths throughout the lungs. Research studies show aberrant expression of NaPi-2b in various type of cancer, including ovarian, breast,

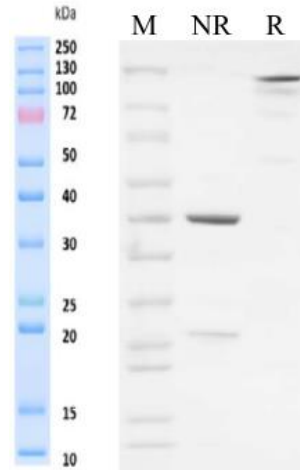
Version:3.1

and lung cancer. Chromosomal rearrangements involving SLC34A2-ROS1 are seen in gastric.

Formulation phosphate-buffered solution, pH 7.4.

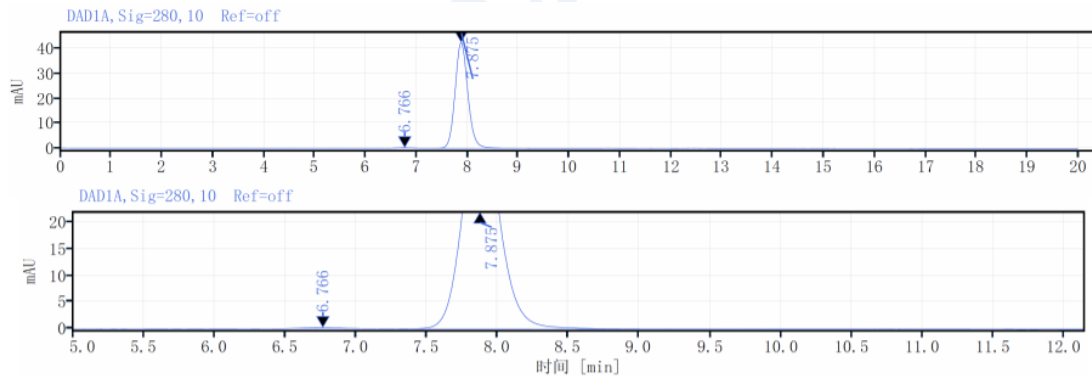
Data Examples

SDS-PAGE



On SDS-PAGE under reducing (R)/non-reducing(N-R) condition. The gel was stained overnight with Coomassie Blue. The purity of the protein is greater than 95%.

SEC-HPLC

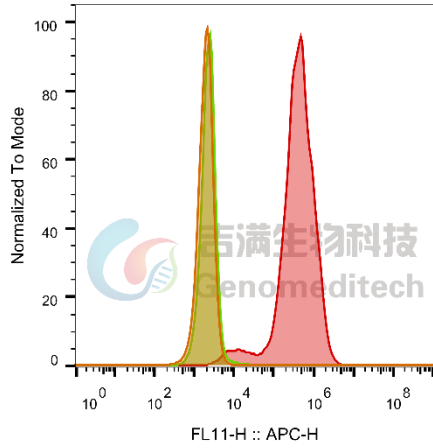


The purity of this product is more than 95% verified by SEC-HPLC

Data Examples

Flow cytometry

H_SLC34A2 CHO-K1 Cell Line (Catalog # GM-C13372) was stained with Anti-SLC34A2 hlgG1 Reference Antibody (Upibio) (Catalog # GM-86855MAB) or isotype control antibody, followed by anti-Human IgG APC-conjugated Secondary Antibody.

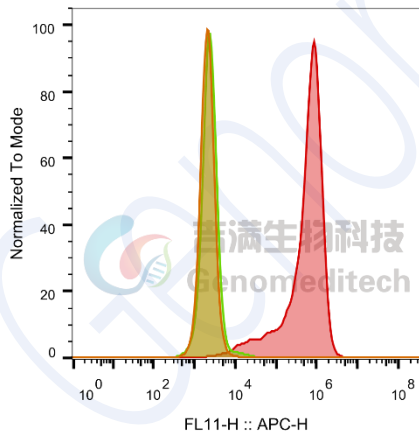


SampleID	Geometric Mean : FL11-H
CHO-K1 anti-H_SLC34A2+APC-2nd Ab	1918
CHO-K1 H_SLC34A2 H_IgG+APC-2nd Ab	2281
CHO-K1 H_SLC34A2 anti-SLC34A2+APC-2nd Ab	361325

Fig. FACS

Flow cytometry

Rhesus_SLC34A2 HEK-293 Cell Line (Catalog # GM-C13322) was stained with Anti-SLC34A2 hlgG1 Reference Antibody (Upibio) (Catalog # GM-86855MAB) or isotype control antibody, followed by anti-Human IgG APC-conjugated Secondary Antibody.



SampleID	Geometric Mean : FL11-H
HEK-293 anti-SLC34A2+APC-2nd Ab	2104
HEK-293 Rhesus_SLC34A2 H_IgG+APC-2nd Ab	2429
HEK-293 Rhesus_SLC34A2 anti-SLC34A2+APC-2nd Ab	4.66E5

Fig. FACS